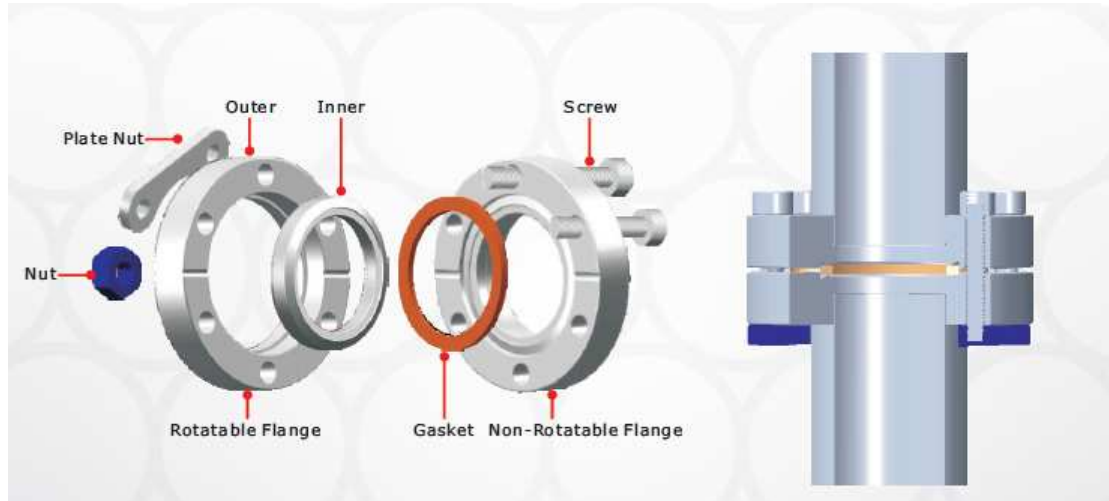


CF Flanges & Components



STANDARD SPECIFICATION

Application:

Ultra High Vacuum

Materials:

304, 304L, 304 ESR, 316L

Flange Sizes:

CF 1.33" ~ CF 16.5"

Tube Sizes:

1/2" ~ 6.0"

Vacuum Range:

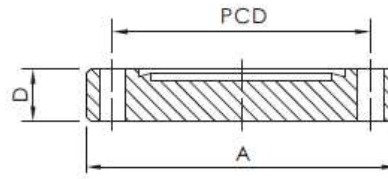
760 Torr ~ 1×10^{-13} Torr

Gasket Materials:

OFHC Copper or Silver Plated

Temperature Range:

-190°C ~ +450°C

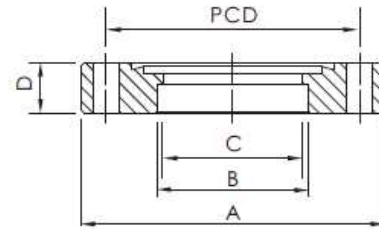


BLANK FLANGES, FIXED

*MATERIALS: 304L, 304ESR, 31 6L

*TAPPED AND THROUGH HOLES

Part Number	Type	Flange Size	A (mm)	D (mm)	PCD	Bolt Holes	Diameter / Thread (mm)
2527010-B0000H	Thru Holes	CF1.33" / CF16	33.70	7.60	26.97	6	4.37
2527010-B0000N	Tapped	CF1.33" / CF16	33.70	7.60	26.87	6	8-32
2527010-C0000H	Thru Holes	CF2.12" / CF25	53.80	11.90	41.28	4	6.73
2527010-C0000N	Tapped	CF2.12" / CF25	53.80	11.90	41.28	4	1/4-28
2527010-D0000H	Thru Holes	CF2.75" / CF35	69.30	12.70	58.72	6	6.73
2527010-D0000N	Tapped	CF2.75" / CF35	69.30	12.70	58.72	6	1/4-28
2527010-E0000H	Thru Holes	CF3.38" / CF50	85.30	16.00	72.39	8	8.43
2527010-E0000N	Tapped	CF3.38" / CF50	85.30	16.00	72.39	8	5/16-24
2527010-F0000H	Thru Holes	CF4.50" / CF63	113.50	17.30	92.15	8	8.43
2527010-F0000N	Tapped	CF4.50" / CF63	113.50	17.30	92.15	8	5/16-24
2527010-G0000H	Thru Holes	CF4.62" / CF80	117.00	19.10	102.36	10	8.43
2527010-G0000N	Tapped	CF4.62" / CF80	117.00	19.10	102.36	10	5/16-24
2527010-H0000H	Thru Holes	CF6.00" / CF100	151.60	19.80	130.25	16	8.43
2527010-H0000N	Tapped	CF6.00" / CF100	151.60	19.80	130.25	16	5/16-24
2527010-J0000H	Thru Holes	CF6.75" / CF130	170.90	21.40	151.61	18	8.43
2527010-J0000N	Tapped	CF6.75" / CF130	170.90	21.40	151.61	18	5/16-24
2527010-K0000H	Thru Holes	CF8.00" / CF160	202.44	22.35	181.05	20	8.43
2527010-K0000N	Tapped	CF8.00" / CF160	202.44	22.35	181.05	20	5/16-24
2527010-L0000H	Thru Holes	CF10.00" / CF200	254.00	24.60	231.85	24	8.43
2527010-L0000N	Tapped	CF10.00" / CF200	254.00	24.60	231.85	24	5/16-24
2527010-M0000H	Thru Holes	CF12.00" / CF250	304.04	25.90	283.97	32	8.43
2527010-M0000N	Tapped	CF12.00" / CF250	304.04	25.90	283.97	32	5/16-24
2527010-N0000H	Thru Holes	CF13.25" / CF270	335.80	28.45	306.32	30	10.49
2527010-N0000N	Tapped	CF13.25" / CF270	335.80	28.45	306.32	30	3/8-24
2527010-P0000H	Thru Holes	CF14.00" / CF300	354.84	28.45	325.37	30	10.49
2527010-R0000H	Thru Holes	CF16.50" / CF350	418.34	28.45	388.87	36	10.49

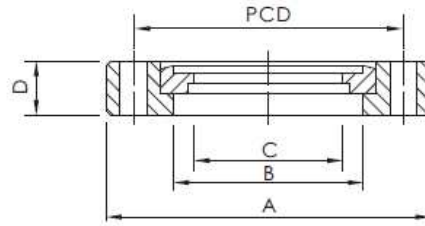


BORED FLANGES, FIXED

*MATERIALS: 304, 304L, 304ESR, 31 6L

* TAPPED AND THROUGH HOLES

Part Number	Type	Flange-Tube	A (mm)	B (mm)	C (mm)	D (mm)	PCD	Bolt Holes	Diameter / Thread (mm)
2427010-B0097H	Thru Holes	CF1.33" - 0.38"	33.70	9.65	-	7.60	26.97	6	4.37
2427010-B0097N	Tapped	CF1.33" - 0.38"	33.70	9.65	-	7.60	26.97	6	8-32
2427010-B0128H	Thru Holes	CF1.33" - 0.50"	33.70	12.83	-	7.60	26.97	6	4.37
2427010-B0128N	Tapped	CF1.33" - 0.50"	33.70	12.83	-	7.60	26.97	6	8-32
2427010-B0160H	Thru Holes	CF1.33" - 0.75"	33.70	19.30	16.00	7.60	26.97	6	4.37
2427010-B0160N	Tapped	CF1.33" - 0.75"	33.70	19.30	16.00	7.60	26.97	6	8-32
2427010-C0239H	Thru Holes	CF2.12" - 1.00"	53.80	25.65	23.90	11.90	41.28	4	6.73
2427010-C0239N	Tapped	CF2.12" - 1.00"	53.80	25.65	23.90	11.90	41.28	4	1/4-28
2427010-D0157H	Thru Holes	CF2.75" - 0.75"	69.30	19.10	15.75	12.70	58.72	6	6.73
2427010-D0157N	Tapped	CF2.75" - 0.75"	69.30	19.10	15.75	12.70	58.72	6	1/4-28
2427010-D0221H	Thru Holes	CF2.75" - 1.00"	69.30	28.20	25.00	12.70	58.72	6	6.73
2427010-D0221N	Tapped	CF2.75" - 1.00"	69.30	28.20	25.00	12.70	58.72	6	1/4-28
2427010-D0366H	Thru Holes	CF2.75" - 1.50"	69.30	38.35	36.60	12.70	58.72	6	6.73
2427010-D0366N	Tapped	CF2.75" - 1.50"	69.30	38.35	36.60	12.70	58.72	6	1/4-28
2427010-E0493H	Thru Holes	CF3.38" - 2.00"	85.30	51.05	49.30	17.40	72.39	8	8.43
2427010-E0493N	Tapped	CF3.38" - 2.00"	85.30	51.05	49.30	17.40	72.39	8	5/16-24
2427010-F0620H	Thru Holes	CF4.50" - 2.50"	113.50	63.75	62.00	17.40	92.15	8	8.43
2427010-F0620N	Tapped	CF4.50" - 2.50"	113.50	63.75	62.00	17.40	92.15	8	5/16-24
2427010-G0747H	Thru Holes	CF4.62" - 3.00"	117.00	76.45	74.70	20.60	102.36	10	8.43
2427010-G0747N	Tapped	CF4.62" - 3.00"	117.00	76.45	74.70	20.60	102.36	10	5/16-24
2427010-H0996H	Thru Holes	CF6.00" - 4.00"	151.60	101.85	99.60	19.80	130.25	16	8.43
2427010-H0996N	Tapped	CF6.00" - 4.00"	151.60	101.85	99.60	19.80	130.25	16	5/16-24
2427010-J1250H	Thru Holes	CF6.75" - 5.00"	170.90	127.25	123.83	21.34	151.61	18	8.43
2427010-J1250N	Tapped	CF6.75" - 5.00"	170.90	127.25	123.83	21.34	151.61	18	5/16-24
2427010-K1504H	Thru Holes	CF8.00" - 6.00"	202.44	152.91	150.40	22.35	181.05	20	8.43
2427010-K1504N	Tapped	CF8.00" - 6.00"	202.44	152.91	150.40	22.35	181.05	20	5/16-24
2427010-L2004H	Thru Holes	CF10.00"- 8.00"	254.00	203.71	200.40	24.60	231.85	24	8.43
2427010-L2004N	Tapped	CF10.00"- 8.00"	254.00	203.71	200.40	24.60	231.85	24	5/16-24
2427010-M2509H	Thru Holes	CF12.00"-10.00"	304.04	254.51	250.95	25.90	283.97	32	8.43
2427010-M2509N	Tapped	CF12.00"-10.00"	304.04	254.51	250.95	25.90	283.97	32	5/16-24
2427010-N2509H	Thru Holes	CF13.25"-10.00"	335.80	254.51	250.95	28.45	306.32	30	10.49
2427010-N2509N	Tapped	CF13.25"-10.00"	335.80	254.51	250.95	28.45	306.32	30	3/8-24
2427010-P3018H	Thru Holes	CF14.00"-12.00"	354.84	305.31	301.75	28.45	325.37	30	10.49
2427010-R3526H	Thru Holes	CF16.50"-14.00"	418.34	356.11	352.55	28.45	388.87	36	10.49

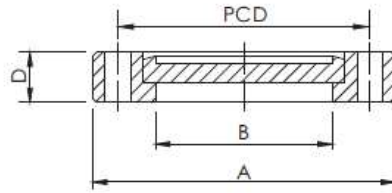


BORED FLANGES, ROTATABLE

* MATERIALS: 304L, 304ESR, 316L

* TAPPED AND THROUGH HOLES

Part Number	Type	Flange-Tube	A (mm)	B (mm)	C (mm)	D (mm)	PCD	Bolt Holes	Diameter / Thread (mm)
2027010-B0128H	Thru Holes	CF1.33" - 0.50"	33.70	-	12.83	7.60	26.97	6	4.37
2027010-B0128N	Tapped	CF1.33" - 0.50"	33.70	-	12.83	7.60	26.97	6	8-32
2027010-B0160H	Thru Holes	CF1.33" - 0.75"	33.70	19.41	16.00	7.60	26.97	6	4.37
2027010-B0160N	Tapped	CF1.33" - 0.75"	33.70	19.41	16.00	7.60	26.97	6	8-32
2027010-C0239H	Thru Holes	CF2.12" - 1.00"	53.80	27.94	23.90	11.90	41.28	4	6.73
2027010-C0239N	Tapped	CF2.12" - 1.00"	53.80	27.94	23.90	11.90	41.28	4	1/4-28
2027010-D0157H	Thru Holes	CF2.75" - 0.75"	69.30	19.10	15.75	12.70	58.72	6	6.73
2027010-D0157N	Tapped	CF2.75" - 0.75"	69.30	19.10	15.75	12.70	58.72	6	1/4-28
2027010-D0366H	Thru Holes	CF2.75" - 1.50"	69.30	45.21	36.60	12.70	58.72	6	6.73
2027010-D0366N	Tapped	CF2.75" - 1.50"	69.30	45.21	36.60	12.70	58.72	6	1/4-28
2027010-E0493H	Thru Holes	CF3.38" - 2.00"	85.30	54.50	49.30	17.30	72.39	8	8.43
2027010-E0493N	Tapped	CF3.38" - 2.00"	85.30	54.50	49.30	17.30	72.39	8	5/16-24
2027010-F0620H	Thru Holes	CF4.50" - 2.50"	113.50	72.39	62.00	19.10	92.15	8	8.43
2027010-F0620N	Tapped	CF4.50" - 2.50"	113.50	72.39	62.00	19.10	92.15	8	5/16-24
2027010-G0747H	Thru Holes	CF4.62" - 3.00"	117.00	79.71	74.70	20.60	102.36	10	8.43
2027010-G0747N	Tapped	CF4.62" - 3.00"	117.00	79.71	74.70	20.60	102.36	10	5/16-24
2027010-H0996H	Thru Holes	CF6.00" - 4.00"	151.60	106.17	99.60	21.30	130.25	16	8.43
2027010-H0996N	Tapped	CF6.00" - 4.00"	151.60	106.17	99.60	21.30	130.25	16	5/16-24
2027010-J1238H	Thru Holes	CF6.75" - 5.00"	170.90	127.25	123.83	21.34	151.61	18	8.43
2027010-J1238N	Tapped	CF6.75" - 5.00"	170.90	127.25	123.83	21.34	151.61	18	5/16-24
2027010-K1504H	Thru Holes	CF8.00" - 6.00"	202.44	152.91	150.40	23.90	181.05	20	8.43
2027010-K1504N	Tapped	CF8.00" - 6.00"	202.44	152.91	150.40	23.90	181.05	20	5/16-24
2027010-L2004H	Thru Holes	CF10.00"- 8.00"	253.24	208.28	200.40	24.60	231.85	24	8.43
2027010-L2004N	Tapped	CF10.00"- 8.00"	253.24	208.28	200.40	24.60	231.85	24	5/16-24
2027010-M2509H	Thru Holes	CF12.00"-10.00"	304.04	254.51	250.95	25.90	283.97	32	8.43
2027010-M2509N	Tapped	CF12.00"-10.00"	304.04	254.51	250.95	25.90	283.97	32	5/16-24
2027010-N2509H	Thru Holes	CF13.25"-10.00"	335.80	270.00	273.43	28.45	306.32	30	10.49
2027010-N2509N	Tapped	CF13.25"-10.00"	335.80	270.00	273.43	28.45	306.32	30	3/8-24
2027010-P3018H	Thru Holes	CF14.00"-12.00"	354.84	305.31	301.75	28.45	325.37	30	10.49
2027010-R3526H	Thru Holes	CF16.50"-14.00"	418.34	356.11	352.55	28.45	388.87	36	10.49

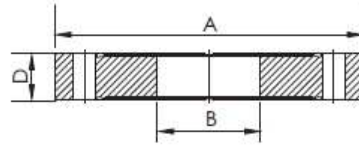


BLANK FLANGES, ROTATABLE

*MATERIALS: 304, 304L, 304ESR, 316L

*TAPPED AND THROUGH HOLES

Part Number	Type	Flange	A (mm)	B (mm)	D (mm)	PCD	Bolt Holes	Diameter / Thread (mm)
2027010-B0000H	Thru Holes	CF1.33"	33.70	19.41	7.60	26.97	6	4.37
2027010-B0000N	Tapped	CF1.33"	33.70	19.41	7.60	26.97	6	8-32
2027010-C0000H	Thru Holes	CF2.12"	53.80	27.94	11.90	41.28	4	6.73
2027010-C0000N	Tapped	CF2.12"	53.80	27.94	11.90	41.28	4	1/4-28
2027010-D0000H	Thru Holes	CF2.75"	69.30	45.21	12.70	58.72	6	6.73
2027010-D0000N	Tapped	CF2.75"	69.30	45.21	12.70	58.72	6	1/4-28
2027010-E0000H	Thru Holes	CF3.38"	85.30	54.50	17.30	72.39	8	8.43
2027010-E0000N	Tapped	CF3.38"	85.30	54.50	17.30	72.39	8	5/16-24
2027010-F0000H	Thru Holes	CF4.50"	113.50	72.39	19.10	92.15	8	8.43
2027010-F0000N	Tapped	CF4.50"	113.50	72.39	19.10	92.15	8	5/16-24
2027010-G0000H	Thru Holes	CF4.62"	117.00	79.71	20.60	102.36	10	8.43
2027010-G0000N	Tapped	CF4.62"	117.00	79.71	20.60	102.36	10	5/16-24
2027010-H0000H	Thru Holes	CF6.00"	151.60	106.17	21.30	130.25	16	8.43
2027010-H0000N	Tapped	CF6.00"	151.60	106.17	21.30	130.25	16	5/16-24
2027010-J0000H	Thru Holes	CF6.75"	170.90	127.25	21.34	151.61	18	8.43
2027010-J0000N	Tapped	CF6.75"	170.90	127.25	21.34	151.61	18	5/16-24
2027010-K0000H	Thru Holes	CF8.00"	202.44	152.91	23.90	181.05	20	8.43
2027010-K0000N	Tapped	CF8.00"	202.44	152.91	23.90	181.05	20	5/16-24
2027010-L0000H	Thru Holes	CF10.00"	254.00	204.22	24.60	231.85	24	8.43
2027010-L0000N	Tapped	CF10.00"	254.00	204.22	24.60	231.85	24	5/16-24
2027010-M0000H	Thru Holes	CF12.00"	304.04	254.51	25.90	283.97	32	8.43
2027010-M0000N	Tapped	CF12.00"	304.04	254.51	25.90	283.97	32	5/16-24
2027010-N0000H	Thru Holes	CF13.25"	335.80	254.51	28.45	306.32	30	10.49
2027010-N0000N	Tapped	CF13.25"	335.80	254.51	28.45	306.32	30	3/8-24
2027010-P0000H	Thru Holes	CF14.00"	354.84	305.31	28.45	325.37	30	10.49
2027010-R0000H	Thru Holes	CF16.50"	418.34	356.11	28.45	388.87	36	10.49

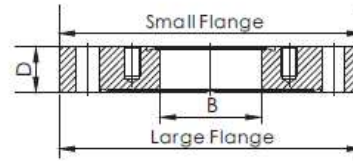
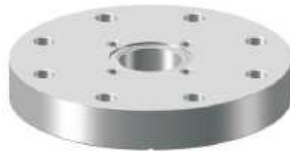


CF DOUBLE-SIDED FLANGES

* MATERIALS: 304, 304L, 304ESR, 316L

* THRU BOLT HOLES

Part Number	Type	Flange-Tube	A (mm)	B (mm)	D (mm)	Bolt Holes	Diameter / Thread (mm)
2627010-BB0000H	Blank	CF1.33"	33.70	-	7.60	6	4.37
2627010-BB0158H	Bored	CF1.33" - 3/4"	33.70	15.88	7.60	6	4.37
2627010-CC0000H	Blank	CF2.12"	53.80	-	11.90	4	6.73
2627010-CC0256H	Bored	CF2.12" - 1.0"	53.80	25.65	11.90	4	6.73
2627010-DD0000H	Blank	CF2.75"	69.30	-	12.70	6	6.73
2627010-DD0385H	Bored	CF2.75" - 1.5"	69.30	38.35	12.70	6	6.73
2627010-EE0000H	Blank	CF3.38"	85.30	-	16.00	8	8.43
2627010-EE0510H	Bored	CF3.38" - 2.0"	85.30	51.05	16.00	8	8.43
2627010-FF0000H	Blank	CF4.50"	113.50	-	17.40	8	8.43
2627010-FF0637H	Bored	CF4.50" - 2.5"	113.50	69.75	17.40	8	8.43
2627010-GG0000H	Blank	CF4.62"	117.00	-	19.10	10	8.43
2627010-GG0764H	Bored	CF4.62" - 3.0"	117.00	79.71	19.10	10	8.43
2627010-HH0000H	Blank	CF6.00"	151.60	-	19.80	16	8.43
2627010-HH1018H	Bored	CF6.00" - 4.0"	151.60	101.85	19.80	16	8.43
2627010-JJ0000H	Blank	CF6.75"	170.69	-	21.34	18	8.43
2627010-JJ1272H	Bored	CF6.75" - 5.0"	170.90	127.25	21.34	18	8.43
2627010-KK0000H	Blank	CF8.00"	202.44	-	22.35	20	8.43
2627010-KK1526H	Bored	CF8.00" - 6.0"	202.44	152.65	22.35	20	8.43
2627010-LL0000H	Blank	CF10.0"	253.24	-	24.60	24	8.43
2627010-LL2034H	Bored	CF10.0" - 8.0"	253.24	203.45	24.60	24	8.43
2627010-NN0000H	Blank	CF13.25"	335.79	-	28.45	30	10.49
2627010-NN2545H	Bored	CF13.25" - 10"	335.79	254.50	28.45	30	10.49



CF ZERO LENGTH REDUCER FLANGES

*MATERIALS: 304, 304L, 304ESR, 316L

Part Number	Large Flange	Small Flange	Tube Size	B (mm)	D (mm)
2627010-CB0157N	CF2.12" Tapped holes	CF1.33" Tapped holes	3/4"	15.75	11.90
2627010-DB0157Z	CF2.75" Thru holes	CF1.33" Tapped holes	3/4"	15.75	12.70
2627010-DC0254N	CF2.75" Tapped holes	CF2.12" Tapped holes	1.0"	25.40	12.70
2627010-EB0157Z	CF3.38" Thru holes	CF1.33" Tapped holes	3/4"	15.75	16.00
2627010-EC0254Z	CF3.38" Thru holes	CF2.12" Tapped holes	1.0"	25.40	16.00
2627010-ED0381N	CF3.38" Tapped holes	CF2.75" Tapped holes	1.5"	38.10	16.00
2627010-FB0157Z	CF4.50" Thru holes	CF1.33" Tapped holes	3/4"	15.75	17.40
2627010-FC0254Z	CF4.50" Thru holes	CF2.12" Tapped holes	1.0"	25.40	17.40
2627010-FD0381Z	CF4.50" Thru holes	CF2.75" Tapped holes	1.5"	38.10	17.40
2627010-FE0508N	CF4.50" Tapped holes	CF3.38" Tapped holes	2.0"	50.80	17.40
2627010-GB0157Z	CF4.62" Thru holes	CF1.33" Tapped holes	3/4"	15.75	19.10
2627010-GC0254Z	CF4.62" Thru holes	CF2.12" Tapped holes	1.0"	25.40	19.10
2627010-GD0381Z	CF4.62" Thru holes	CF2.75" Tapped holes	1.5"	38.10	19.10
2627010-GE0508Z	CF4.62" Thru holes	CF3.38" Tapped holes	2.0"	50.80	19.10
2627010-HB0157Z	CF6.00" Thru holes	CF1.33" Tapped holes	3/4"	15.75	19.80
2627010-HC0254Z	CF6.00" Thru holes	CF2.12" Tapped holes	1.0"	25.40	19.80
2627010-HD0381Z	CF6.00" Thru holes	CF2.75" Tapped holes	1.5"	38.10	19.80
2627010-HE0508Z	CF6.00" Thru holes	CF3.38" Tapped holes	2.0"	50.80	19.80
2627010-HF0635Z	CF6.00" Thru holes	CF4.50" Tapped holes	2.5"	63.50	19.80
2627010-HG0762Z	CF6.00" Thru holes	CF4.62" Tapped holes	3.0"	76.20	19.80
2627010-JD0381Z	CF6.75" Thru holes	CF2.75" Tapped holes	1.5"	38.10	21.34
2627010-JF0635Z	CF6.75" Thru holes	CF4.50" Tapped holes	2.5"	63.50	21.34
2627010-KB0157Z	CF8.00" Thru holes	CF1.33" Tapped holes	3/4"	15.75	22.35
2627010-KD0381Z	CF8.00" Thru holes	CF2.75" Tapped holes	1.5"	38.10	22.35
2627010-KF0635Z	CF8.00" Thru holes	CF4.50" Tapped holes	2.5"	63.50	22.35
2627010-KH1016Z	CF8.00" Thru holes	CF6.00" Tapped holes	4.0"	101.60	22.35
2627010-LB0157Z	CF10.0" Thru holes	CF1.33" Tapped holes	3/4"	15.75	24.60
2627010-LD0381Z	CF10.0" Thru holes	CF2.75" Tapped holes	1.5"	38.10	24.60
2627010-LF0635Z	CF10.0" Thru holes	CF4.50" Tapped holes	2.5"	63.50	24.60
2627010-LH1016Z	CF10.0" Thru holes	CF6.00" Tapped holes	4.0"	101.60	24.60
2627010-LK1524Z	CF10.0" Thru holes	CF8.00" Tapped holes	6.0"	152.40	24.60
2627010-NB0157Z	CF13.25" Thru holes	CF1.33" Tapped holes	3/4"	15.75	28.45
2627010-ND0381Z	CF13.25" Thru holes	CF2.75" Tapped holes	1.5"	38.10	28.45
2627010-NF0635Z	CF13.25" Thru holes	CF4.50" Tapped holes	2.5"	63.50	28.45
2627010-NH1016Z	CF13.25" Thru holes	CF6.00" Tapped holes	4.0"	101.60	28.45
2627010-NK1524Z	CF13.25" Thru holes	CF8.00" Tapped holes	6.0"	152.40	28.45
2627010-NL2540Z	CF13.25" Thru holes	CF10.0" Tapped holes	10.0"	254.00	28.45

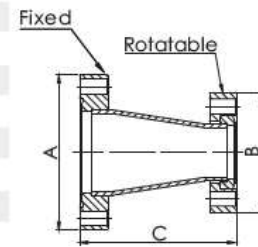


CF FLANGE CONICAL REDUCERS

*MATERIALS: 304, 304L, 31 6L

*TUBE FINISHES: BEAD BLASTED, TUMBLED, OD POLISHED

Part Number	Flange Size	A	B	C
2505400-01075	CF2.12"/1.33"	2.12"	1.33"	51.90
2505400-01575	CF2.75"/1.33"	2.75"	1.33"	78.30
2505400-01510	CF2.75"/2.12"	2.75"	2.12"	69.90
2505400-02010	CF3.38"/2.12"	3.38"	2.12"	70.30
2505400-02015	CF3.38"/2.75"	3.38"	2.75"	71.30
2505400-02515	CF4.50"/2.75"	4.50"	2.75"	75.20
2505400-02520	CF4.50"/3.38"	4.50"	3.38"	75.60
2505400-03015	CF4.62"/2.75"	4.62"	2.75"	104.50
2505400-03020	CF4.62"/3.38"	4.62"	3.38"	104.90
2505400-03025	CF4.62"/4.50"	4.62"	4.50"	108.70
2505400-04020	CF6.00"/3.38"	6.00"	3.38"	108.90
2505400-04025	CF6.00"/4.50"	6.00"	4.50"	112.70
2505400-04030	CF6.00"/4.62"	6.00"	4.62"	110.30

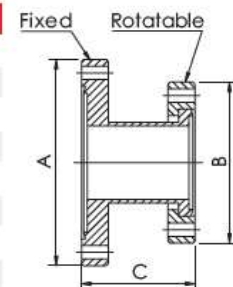


CF FLANGE REDUCER NIPPLES

*MATERIALS: 304, 304L, 31 6L

*TUBE FINISHES: BEAD BLASTED, TUMBLED, OD POLISHED

Part Number	Flange Size	A	B	C
2505411-01575	CF2.75"/1.33"	2.75"	1.33"	45.00
2505411-02575	CF4.50"/1.33"	4.50"	1.33"	70.00
2505411-02515	CF4.50"/2.75"	4.50"	2.75"	75.00
2505411-04016	CF6.00"/2.75"	6.00"	2.75"	127.00
2505411-06016	CF8.00"/2.75"	8.00"	2.75"	127.00
2505411-06026	CF8.00"/4.50"	8.00"	4.50"	127.00
2505411-06041	CF8.00"/6.00"	8.00"	6.00"	127.00
2505411-08016	CF10.00"/2.75"	10.00"	2.75"	127.00
2505411-08026	CF10.00"/4.50"	10.00"	4.50"	127.00
2505411-08041	CF10.00"/6.00"	10.00"	6.00"	127.00
2505411-08061	CF10.00"/8.00"	10.00"	8.00"	127.00



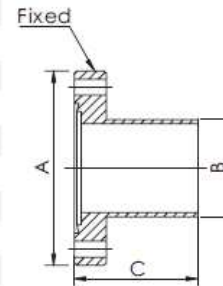
CF FLANGE HALF NIPPLES

*MATERIALS: 304, 304L, 31 6L

*TUBE FINISHES: BEAD BLASTED, TUMBLED, OD POLISHED



Part Number	Flange Size	A	B	C
2514071-0133	CF1.33"	1.33"	19.05	38.10
2514071-0212	CF2.12"	2.12"	25.40	52.07
2514071-0275	CF2.75"	2.75"	38.10	62.48
2514071-0338	CF3.38"	3.38"	50.80	81.79
2514071-0450	CF4.50"	4.50"	63.50	85.85
2514071-0462	CF4.62"	4.62"	76.20	89.66
2514071-0600	CF6.00"	6.00"	101.60	109.73
2514071-0675	CF6.75"	6.75"	127.00	109.70
2514071-0800	CF8.00"	8.00"	152.40	139.70
2514071-1000	CF10.00"	10.00"	203.20	203.20



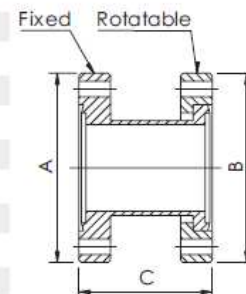
CF FLANGE FULL NIPPLES

*MATERIALS: 304, 304L, 31 6L

*TUBE FINISHES: BEAD BLASTED, TUMBLED, OD POLISHED



Part Number	Flange Size	A	B	C
2514072-0133	CF1.33"	1.33"	1.33"	76.20
2514072-0212	CF2.12"	2.12"	2.12"	104.14
2514072-0275	CF2.75"	2.75"	2.75"	124.97
2514072-0338	CF3.38"	3.38"	3.38"	163.58
2514072-0450	CF4.50"	4.50"	4.50"	171.70
2514072-0462	CF4.62"	4.62"	4.62"	179.32
2514072-0600	CF6.00"	6.00"	6.00"	219.46
2514072-0675	CF6.75"	6.75"	6.75"	214.90
2514072-0800	CF8.00"	8.00"	8.00"	279.40
2514072-1000	CF10.00"	10.00"	10.00"	406.40



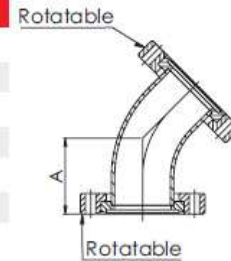
45° ELBOWS

*MATERIALS: 304, 304L, 316L

*TUBE FINISHES: BEAD BLASTED, TUMBLED, OD POLISHED



Part Number	Flange Size	A
2506401-00075	CF1.33"	23.80
2506401-00100	CF2.12"	28.90
2506401-00150	CF2.75"	44.20
2506401-00200	CF3.38"	52.50
2506401-00250	CF4.50"	85.60
2506401-00300	CF4.62"	100.60
2506401-00400	CF6.00"	132.50



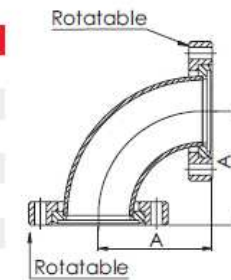
90° ELBOWS

*MATERIALS: 304, 304L, 316L

*TUBE FINISHES: BEAD BLASTED, TUMBLED, OD POLISHED



Part Number	Flange Size	A
2506400-00075	CF1.33"	38.10
2506400-00100	CF2.12"	42.40
2506400-00150	CF2.75"	62.50
2506400-00200	CF3.38"	81.80
2506400-00250	CF4.50"	104.60
2506400-00300	CF4.62"	121.40
2506400-00400	CF6.00"	163.60



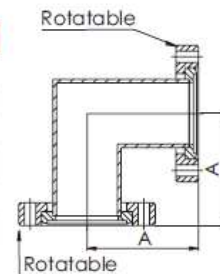
90° MITERED ELBOWS

*MATERIALS: 304, 304L, 316L

*TUBE FINISHES: BEAD BLASTED, TUMBLED, OD POLISHED



Part Number	Flange Size	A
2506403-00075	CF1.33"	38.10
2506403-00100	CF2.12"	52.00
2506403-00150	CF2.75"	62.50
2506403-00200	CF3.38"	81.80
2506403-00250	CF4.50"	85.90
2506403-00300	CF4.62"	89.70
2506403-00400	CF6.00"	109.70



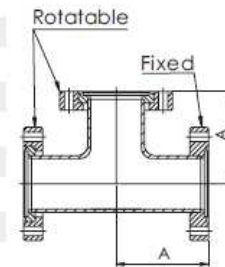
TEES

*MATERIALS: 304, 304L, 316L

*TUBE FINISHES: BEAD BLASTED, TUMBLED, OD POLISHED



Part Number	Flange Size	A
2503401-00075	CF1.33"	38.10
2503401-00100	CF2.12"	52.05
2503401-00150	CF2.75"	62.50
2503401-00200	CF3.38"	81.80
2503401-00250	CF4.50"	85.85
2503401-00252	CF4.50"-L	104.65
2503401-00300	CF4.62"	89.70
2503401-00400	CF6.00"	109.70
2503401-00402	CF6.00"-L	134.88



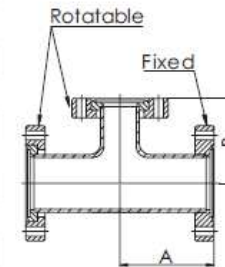
REDUCING TEES

*MATERIALS: 304, 304L, 316L

*TUBE FINISHES: BEAD BLASTED, TUMBLED, OD POLISHED



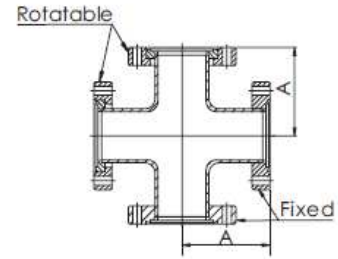
Part Number	Flange Size	A	B
2503401-01575	CF2.75"/1.33"	62.50	47.50
2503401-01510	CF2.75"/2.12"	62.50	58.20
2503401-02075	CF3.38"/1.33"	81.80	54.10
2503401-02015	CF3.38"/2.75"	81.80	68.80
2503401-02515	CF4.50"/2.75"	85.90	75.20
2503401-02520	CF4.50"/3.38"	85.90	88.40
2503401-03020	CF4.62"/3.38"	89.70	94.70
2503401-03025	CF4.62"/4.50"	89.70	92.20
2503401-04015	CF6.00"/2.75"	109.70	94.20
2503401-04020	CF6.00"/3.38"	109.70	107.40
2503401-04025	CF6.00"/4.50"	109.70	104.90
2503401-04030	CF6.00"/4.62"	109.70	102.40



CROSSES

*MATERIALS: 304, 304L, 31 6L

*TUBE FINISHES: BEAD BLASTED, TUMBLED, OD POLISHED

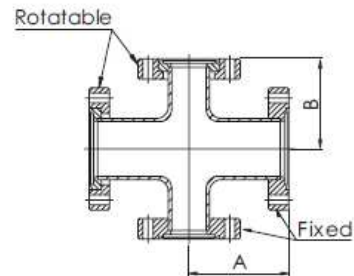


Part Number	Flange Size	A
2504401-00075	CF1.33"	38.10
2504401-00100	CF2.12"	52.00
2504401-00150	CF2.75"	62.50
2504401-00200	CF3.38"	81.80
2504401-00250	CF4.50"	85.90
2504401-00300	CF4.62"	89.70
2504401-00400	CF6.00"	109.70

REDUCING CROSSES

*MATERIALS: 304, 304L, 31 6L

*TUBE FINISHES: BEAD BLASTED, TUMBLED, OD POLISHED



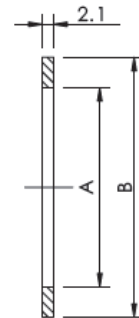
Part Number	Flange Size	A	B
2504401-01575	CF2.75"/1.33"	62.50	47.50
2504401-01510	CF2.75"/2.12"	62.50	58.20
2504401-02075	CF3.38"/1.33"	81.80	54.10
2504401-02015	CF3.38"/2.75"	81.80	68.80
2504401-02515	CF4.50"/2.75"	85.90	75.20
2504401-02520	CF4.50"/3.38"	85.90	88.40
2504401-03020	CF4.62"/3.38"	89.70	94.70
2504401-03025	CF4.62"/4.50"	89.70	92.20
2504401-04015	CF6.00"/2.75"	109.70	94.20
2504401-04020	CF6.00"/3.38"	109.70	107.40
2504401-04025	CF6.00"/4.50"	109.70	104.90
2504401-04030	CF6.00"/4.62"	109.70	104.90

OFHC-COPPER SEALS

*SURFACE FINISHES: ORIGINAL, BEADBLASTED, SILVER PLATED, NICKLE PLATED



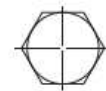
Part Number	Flange Size	A	B
2415003-0016	CF1.33"/CF16	16.20	21.25
2415003-0025	CF2.12"/CF25	25.65	32.77
2415003-0035	CF2.75"/CF35	36.80	48.10
2415003-0040	CF2.75"/CF40	39.00	48.10
2415003-0050	CF3.38"/CF50	51.05	61.60
2415003-0063	CF4.50"/CF63	63.60	82.35
2415003-0080	CF4.62"/CF80	76.45	91.39
2415003-0100	CF6.00"/CF100	101.80	120.45
2415003-0130	CF6.75"/CF130	127.25	141.40
2415003-0150	CF8.00"/CF160	152.60	171.25
2415003-0200	CF10.00"/CF200	203.40	222.05
2415003-0250	CF12.00"/CF250	254.20	272.85
2415003-0300	CF14.00"/CF300	300.00	313.00
2415003-0350	CF16.50"/CF350	356.50	376.60



HEX HEAD BOLTS - METRIC THREAD

*MATERIAL: STAINLESS STEEL

*SET: BOLTS, NUTS & WASHERS



Part Number	Flange Size	Thread	Length	No. of Sets
A 27 270030B0000 10	CF1.33"	M4xP0.70	20.00	25
A 27 270030D0000 10	CF2.75"	M6xP1.00	35.00	25
A 27 270030F0000 10	CF4.50"	M8xP1.25	45.00	25
A 27 270030H0000 10	CF6.00"	M8xP1.25	50.00	25
A 27 270030K0000 10	CF8.00"	M8xP1.25	60.00	25
A 27 270030L0000 10	CF10.0"	M8xP1.25	60.00	25

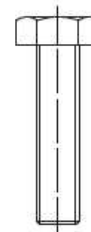


PLATE NUTS - METRIC THREAD

*MATERIAL: STAINLESS STEEL



Part Number	Flange Size	Diagram	A	B	C	D	E
2627A03-0B0000	CF1.33"	A	20.00	7.00	13.00	3.00	M4xP0.7
2627A03-0D0000	CF2.75"	A	41.00	12.00	29.00	4.00	M6xP1.0
2627A03-0F0000	CF4.50"	B	51.00	12.00	35.00	5.00	M8xP1.25
2627A03-0H0000	CF6.00"	B	41.00	12.00	25.00	5.00	M8xP1.25
2627A03-0K0000	CF8.00"	B	44.00	12.00	28.00	5.00	M8xP1.25
2627A03-0L0000	CF10.00"	B	44.00	12.00	30.00	5.00	M8xP1.25

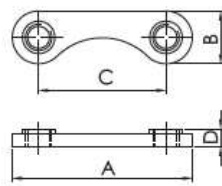


Diagram A

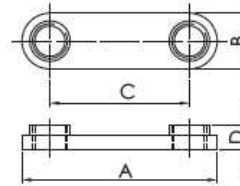


Diagram B



PLATE NUTS - INCH THREAD

*MATERIAL: STAINLESS STEEL

Part Number	Flange Size	Diagram	A	B	C	D	E
2627A02-0B0000	CF1.33"	A	20.30	7.62	13.46	3.20	1/8-32
2627A02-0D0000	CF2.75"	A	42.16	12.70	29.46	5.10	1/4-28
2627A02-0E0000	CF3.38"	B	44.45	12.70	27.69	5.30	5/16-24
2627A02-0F0000	CF4.50"	B	51.56	12.70	35.30	5.30	5/16-24
2627A02-0G0000	CF4.62"	B	45.80	12.70	31.60	5.30	5/16-24
2627A02-0H0000	CF6.00"	B	41.65	12.70	25.40	5.30	5/16-24
2627A02-0K0000	CF8.00"	B	44.45	12.70	28.45	5.30	5/16-24
2627A02-0L0000	CF10.00"	B	44.45	12.70	30.23	5.30	5/16-24

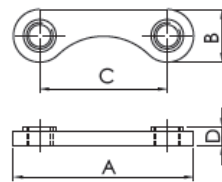


Diagram A

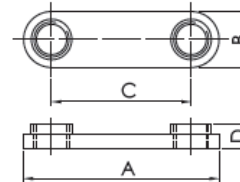


Diagram B