

KF Flange & Components



STANDARD SPECIFICATION

Application:

High Vacuum

Materials:

304, 304L, 316L or aluminum

Flange Sizes:

KF10~KF50

Tube Sizes:

½"~2.0"

Surface Finish: Bead-blasted
Other finishes are also available.

Vacuum Range:

760 Torr ~ 1×10^{-8} Torr

Gasket Materials:

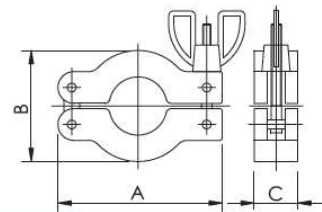
Viton, Buna-N or Silicon

Temperature Range:

≤200°C(150°C sustained)

KF WING-NUT CLAMPS

*DIE-CASTING ALUMINUM CLAMP



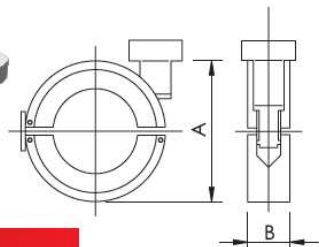
Part Number	Size	A	B	C
2513001-0016	KF10/16	62.30	41.00	16.50
2513001-0025	KF25	72.40	54.00	16.50
2513001-0040	KF40	89.70	69.00	16.50
2513001-0050	KF50	114.00	90.00	21.50

KF CNC MACHINED CLAMPS

*CNC MACHINED CLAMP MADE BY ALUMINUM SOLID BAR FOR EXTRA RIGID STRENGTH AND DURABLE

*3 TIMES TENSILE STRENGTH THAN DIE-CASTING CLAMPS

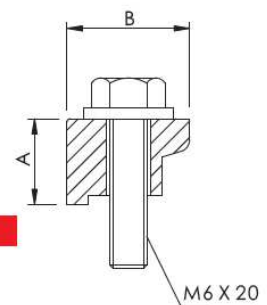
*INTEGRAL LATCHING APPARATUS CAN PREVENT UNINTENTIONAL OPENING



Part Number	Size	A	B
2513009-0016	KF10/16	50.80	15.88
2513009-0025	KF25	63.60	15.90
2513009-0040	KF40	74.70	15.88
2513009-0050	KF50	101.60	15.88

KF WALL CLAMPS

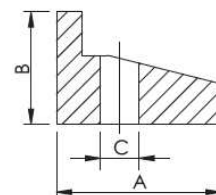
*DIE-CASTING ALUMINUM CLAMP



Part Number	Size	A	B
2413005-1050	KF10~KF50	15.00	20.00

KF WALL CLAMPS

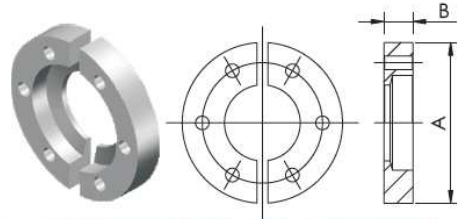
*MATERIAL: ALUMINUM



Part Number	Size	A	B	C
2513005-1050	KF10~KF50	20.40	13.90	6.10

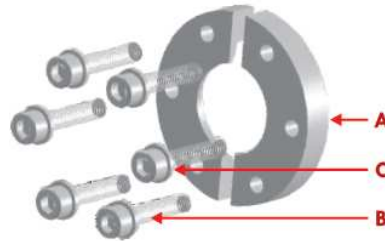
KF BULKHEAD CLAMPS

*MATERIAL: ALUMINUM



Part Number	Size	A	B	Bolt Hole Size	No of Bolt Holes
2113009-0016	KF16	50.80	9.20	4.30	6
2113009-0017	KF16-5.30	50.80	9.20	5.30	6
2113009-0025	KF25	60.30	9.90	5.30	6
2113009-0040	KF40	74.60	9.30	5.30	6
2113009-0050	KF50	95.20	10.30	5.30	8

KF BULKHEAD CLAMP SETS



Part Number	Size	A (1 SET)	B (PCS)	C (PCS)
2113010-0017	NW16	2113009-0017	#10-32UNF-15.9L(6PCS)	#10-32UNF(6PCS)
2113010-0025	NW25	2113009-0025	#10-32UNF-15.9L(6PCS)	#10-32UNF(6PCS)
2113010-0040	NW40	2113009-0040	#10-32UNF-15.9L(6PCS)	#10-32UNF(6PCS)
2113010-0050	NW50	2113009-0050	#10-32UNF-15.9L(8PCS)	#10-32UNF(8PCS)

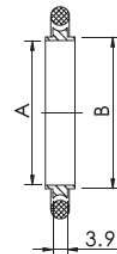
KF CENTERING RINGS WITH O-RING

*MATERIALS: 304, 316L or ALUMINUM

*O-RING MATERIAL: VITON, SILICON or BUNA-N



Part Number	Size	A	B
2525003-0010	KF10	10.00	12.00
2525003-0016	KF16	16.00	17.00
2525003-0025	KF25	25.00	26.00
2525003-0040	KF40	40.00	41.00
2525003-0050	KF50	50.00	52.00

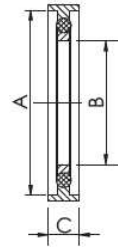


KF CENTERING RING ASSEMBLY WITH ALUMINUM SPACER

*CENTERING RING MATERIAL: 304, 316L or ALUMINUM

*O-RING MATERIAL: VITON, SILICON or BUNA-N

*SPACER MATERIAL: ALUMINUM



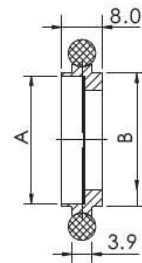
Part Number	Size	A	B	C
2425002-0016	KF16	30.00	16.00	7.00
2425002-0025	KF25	40.00	25.00	7.00
2425002-0040	KF40	55.00	40.00	7.00
2425002-0050	KF50	75.00	50.00	7.00

KF SCREENED CENTERING RINGS WITH O-RING

*MATERIALS: 304, 316L

*O-RING: VITON, SILICON or BUNA-N

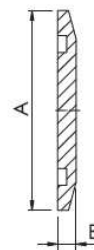
*70 MESH SCREEN



Part Number	Size	A	B
2525008-0010	KF10	10.00	12.00
2525008-0016	KF16	16.00	17.00
2525008-0025	KF25	25.00	26.00
2525008-0040	KF40	40.00	41.00
2525008-0050	KF50	50.00	52.00

KF BLANK FLANGES

*MATERIALS: 304, 304L, 316L or ALUMINUM



Part Number	Size	A	B
2516001-0050	KF10	30.00	5.10
2516001-0075	KF16	30.00	5.10
2516001-0100	KF25	40.00	5.10
2516001-0150	KF40	55.00	5.10
2516001-0200	KF50	75.00	5.10





KF BORED WELD FLANGES

*MATERIALS: 304, 304L, 316L or ALUMINUM

Part Number	Size	Diagram	A	B	C	D	E
2514060-1038	KF10-3/8"	A	30.00	12.70	-	9.65	5.10
2514060-1614	KF16-1/4"	A	30.00	17.20	-	6.50	5.10
2514060-1638	KF16-3/8"	A	30.00	17.20	-	9.65	5.10
2514060-1612	KF16-1/2"	B	30.00	17.20	10.16	12.95	5.10
2514060-1634	KF16-3/4"	B	30.00	17.20	16.51	19.30	4.40
2514060-2514	KF25-1/4"	A	40.00	26.20	-	6.50	5.10
2514060-2538	KF25-3/8"	A	40.00	26.20	-	9.65	5.10
2514060-2512	KF25-1/2"	B	40.00	26.20	10.16	12.95	5.10
2514060-2534	KF25-3/4"	B	40.00	26.20	16.51	19.30	5.10
2514060-2510	KF25-1.0"	B	40.00	26.20	22.88	25.65	4.90
2514060-4014	KF40-1/4"	A	55.00	41.20	-	6.50	5.10
2514060-4038	KF40-3/8"	A	55.00	41.20	-	9.65	5.10
2514060-4012	KF40-1/2"	B	55.00	41.20	10.16	12.95	5.10
2514060-4034	KF40-3/4"	B	55.00	41.20	16.51	19.30	5.10
2514060-4010	KF40-1.0"	B	55.00	41.20	22.88	5.65	5.10
2514060-4015	KF40-1.5"	B	55.00	41.20	35.58	38.35	5.10
2514060-5014	KF50-1/4"	A	75.00	52.20	-	6.50	5.10
2514060-5038	KF50-3/8"	A	75.00	52.20	-	9.65	5.10
2514060-5012	KF50-1/2"	B	75.00	52.20	10.16	12.95	5.10
2514060-5034	KF50-3/4"	B	75.00	52.20	16.51	19.30	5.10
2514060-5010	KF50-1.0"	B	75.00	52.20	22.88	25.65	5.10
2514060-5015	KF50-1.5"	B	75.00	52.20	35.58	38.35	5.10
2514060-5020	KF50-2.0"	B	75.00	52.20	48.26	51.05	5.10

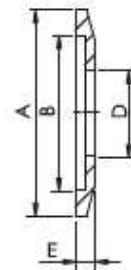


Diagram A

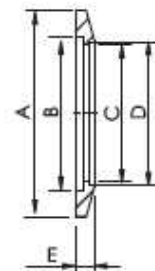


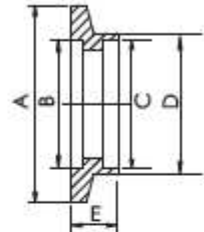
Diagram B



KF SOCKET WELD FLANGES, SHORT

*MATERIALS: 304, 304L, 316L or ALUMINUM

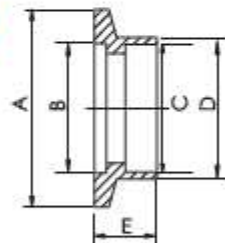
Part Number	Size	A	B	C	D	E
2514012-0075	KF16	30.00	17.30	19.30	22.40	6.35
2514012-0100	KF25	40.00	26.30	25.70	28.80	6.35
2514012-0150	KF40	55.00	41.30	38.40	41.50	6.35
2514012-0200	KF50	75.00	52.30	51.10	54.20	6.35



KF SOCKET WELD FLANGES, LONG

*MATERIALS: 304, 304L, 316L or ALUMINUM

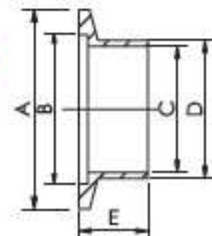
Part Number	Size	A	B	C	D	E
2514006-0050	KF10	30.00	12.20	13.00	15.50	12.70
2514006-0075	KF16	30.00	17.30	19.30	22.20	12.70
2514006-0100	KF25	40.00	26.20	25.90	28.60	12.70
2514006-0150	KF40	55.00	41.10	38.60	44.50	12.70
2514006-0200	KF50	75.00	52.30	51.30	57.20	12.70



KF WELD STUB FLANGES, SHORT

*MATERIALS: 304, 304L, 316L or ALUMINUM

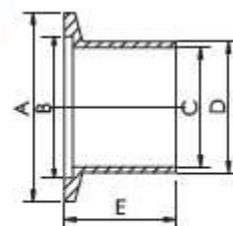
Part Number	Size	A	B	C	D	E
2514001-0050	KF10	30.00	12.20	9.40	12.70	12.70
2514001-0075	KF16	30.00	12.70	15.70	19.10	12.70
2514001-0100	KF25	40.00	26.20	22.10	25.40	12.70
2514001-0150	KF40	55.00	41.20	34.80	38.10	19.10
2514001-0200	KF50	75.00	52.20	47.50	50.80	19.10



KF WELD STUB FLANGES, LONG

*MATERIALS: 304, 304L, 316L or ALUMINUM

Part Number	Size	A	B	C	D	E
2514002-0050	KF10	30.00	12.20	9.40	12.70	40.00
2514002-7550	K10/16	30.00	17.20	9.40	12.70	40.00
2514002-0075	KF16	30.00	17.20	15.70	19.10	40.00
2514002-0100	KF25	40.00	26.20	22.10	25.40	40.00
2514002-0150	KF40	55.00	41.20	34.90	38.10	40.00
2514002-0200	KF50	75.00	52.20	47.60	50.80	40.00

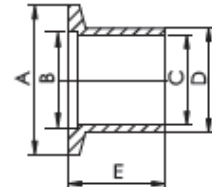


KF WELD STUB FLANGES, SCH5

*MATERIALS: 304, 304L or 316L



Part Number	Size	A	B	C	D	E
2114006-0010	KF10	30.00	12.20	11.40	13.80	20.00
2114006-0016	KF16	30.00	17.20	18.40	21.70	20.00
2114006-0025	KF25	40.00	26.20	23.90	27.20	20.00
2114006-0040	KF40	55.00	41.20	39.40	42.70	20.00
2114006-0050	KF50	75.00	52.20	57.20	60.50	20.00

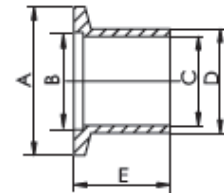


KF WELD STUB FLANGES, SCH10

*MATERIALS: 304, 304L or 316L



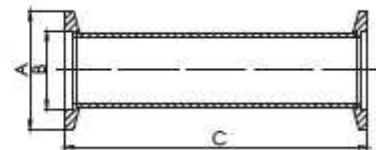
Part Number	Size	A	B	C	D	E
2114005-0010	KF10	30.00	12.20	10.00	13.80	20.00
2114005-0016	KF16	30.00	17.20	16.00	21.70	20.00
2114005-0025	KF25	40.00	26.20	23.00	27.20	20.00
2114005-0040	KF40	55.00	41.20	37.10	42.70	20.00
2114005-0050	KF50	75.00	52.20	54.90	60.50	20.00



KF FULL NIPPLES, SHORT

*MATERIALS: 304, 304L or 316L

*TUBE FINISHES: BEAD BLASTED, TUMBLED, OD POLISHED



Part Number	Size	A	B	C
2514097-0010	KF10-2.50"	30.00	12.20	63.50
2514097-0016	KF16-2.30"	30.00	17.30	58.40
2514097-0025	KF25-4.00"	40.00	26.20	103.10
2514097-0040	KF40-4.80"	55.00	41.10	121.90
2514097-0050	KF50-6.30"	75.00	52.30	160.00

KF HALF NIPPLES

*MATERIALS: 304, 304L or 316L

Part Number	Size	Diagram	A	B	C	D	E
2514098-0010	KF 10-1.25"	A	30.00	12.20	9.40	12.70	31.75
2514098-0016	KF 16-1.15"	A	30.00	17.30	15.80	19.10	29.21
2514029-1607	KF 16-1.50"	A	30.00	17.30	15.80	19.10	38.10
2514098-0025	KF 25-2.03"	B	40.00	26.20	22.10	25.40	51.56
2514029-2510	KF 25-2.04"	A	40.00	26.20	22.10	25.40	51.80
2514098-0040	KF40-2.40"	B	55.00	41.10	34.80	38.10	60.96
2514098-0050	KF50-3.15"	B	75.00	52.30	47.50	50.80	80.01

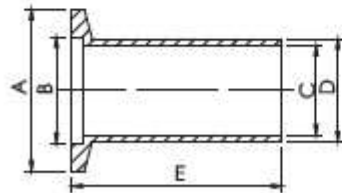


Diagram A
Machined

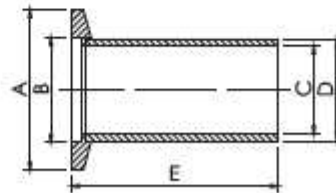


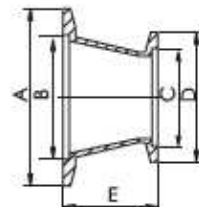
Diagram B
Welded



KF CONICAL REDUCER

*MATERIALS: 304, 304L, 316L or ALUMINUM

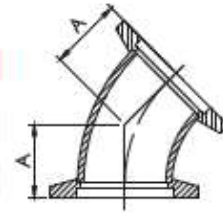
Part Number	Size	A	B	C	D	E
2505204-1075	KF25xKF16	40.00	26.16	17.27	30.00	39.90
2505204-1575	KF40xKF16	55.00	41.15	17.27	30.00	39.90
2505204-1510	KF40xKF25	55.00	41.15	26.16	40.00	39.90
2505204-2075	KF50xKF16	75.00	52.32	17.27	30.00	39.90
2505204-2010	KF50xKF25	75.00	52.32	26.16	40.00	39.90
2505204-2015	KF50xKF40	75.00	52.32	41.15	55.00	39.90



KF 45° ELBOWS

*MATERIALS: 304, 304L or 316L

*TUBE FINISHES: BEAD-BLASTED, TUMBLED OR OD POLISHED

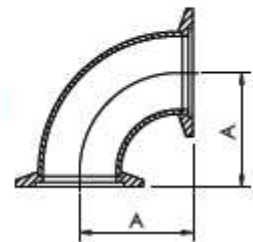


Part Number	Size	A
2506201-0016	KF16	15.65
2506201-0025	KF25	19.58
2506201-0040	KF40	27.47
2506201-0050	KF50	35.36

KF 90° ELBOWS

*MATERIALS: 304, 304L or 316L

*TUBE FINISHES: BEAD-BLASTED, TUMBLED or OD POLISHED

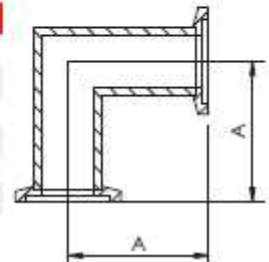


Part Number	Size	A
2506200-0016	KF16	29.20
2506200-0025	KF25	41.90
2506200-0040	KF40	61.00
2506200-0050	KF50	80.00

KF 90° MITERED ELBOWS

*MATERIALS: 304, 304L or 316L

*TUBE FINISHES: BEAD-BLASTED, TUMBLED or OD POLISHED



Part Number	Size	A
2506305-0016	KF16	29.21
2506303-0016	KF16-H	39.90
2506305-0025	KF25-H	51.56
2506305-0040	KF40	60.96
2506303-0040	KF40-H	65.00
2506305-0050	KF50	70.10
2506305-0051	KF50-H	80.01



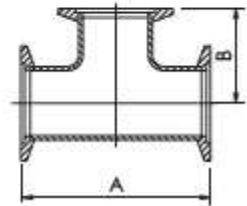
KF EQUAL TEES

*MATERIALS: 304, 304L or 31 6L

*TUBE FINISHES: BEAD-BLASTED, TUMBLED or OD POLISHED



Part Number	Size	A	B
2503301-0010	KF10	63.50	31.75
2503301-0016	KF16	58.40	29.20
2503306-0016	KF16-H	80.00	40.00
2503306-0025	KF25-H	100.00	50.00
2503301-0025	KF25	102.80	51.60
2503301-0040	KF40	122.00	61.00
2503306-0040	KF40-H	130.00	65.00
2503306-0050	KF50-H	140.00	70.00
2503301-0050	KF50	160.00	80.00



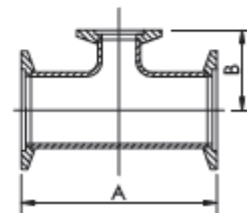
KF REDUCING TEES

*MATERIALS: 304, 304L or 31 6L

*TUBE FINISHES: BEAD-BLASTED, TUMBLED or OD POLISHED



Part Number	Size	A	B
2503307-2516	KF25 x KF16	100.00	27.80
2503306-2516	KF25 x KF16	100.00	43.20
2503301-2516	KF25 x KF16	103.10	32.25
2503301-4016	KF40 x KF16	121.90	38.85
2503307-4016	KF40 x KF16	130.00	34.00
2503306-4016	KF40 x KF16	130.00	49.50
2503301-4025	KF40 x KF25	121.90	57.90
2503306-4025	KF40 x KF25	130.00	56.40
2503307-5017	KF50 x KF16	140.00	40.10
2503306-5016	KF50 x KF16	140.00	55.90
2503301-5016	KF50 x KF16	160.00	45.20
2503306-5025	KF50 x KF25	140.00	62.70
2503306-5040	KF50 x KF40	140.00	71.40
2503301-5040	KF50 x KF40	160.00	67.31



KF 4-WAY CROSSES

*MATERIALS: 304, 304L or 31 6L

*TUBE FINISHES: BEAD-BLASTED, TUMBLED or OD POLISHED



Part Number	Size	A	B
2504301-0010	KF10	63.50	31.75
2504301-0016	KF16	58.40	29.20
2504306-0016	KF16-H	80.00	40.00
2504306-0025	KF25-H	100.00	50.00
2504301-0025	KF25	102.80	51.40
2504301-0040	KF40	122.00	61.00
2504306-0040	KF40-H	130.00	65.00
2504306-0050	KF50-H	140.00	70.00
2504301-0050	KF50	160.00	80.00

